

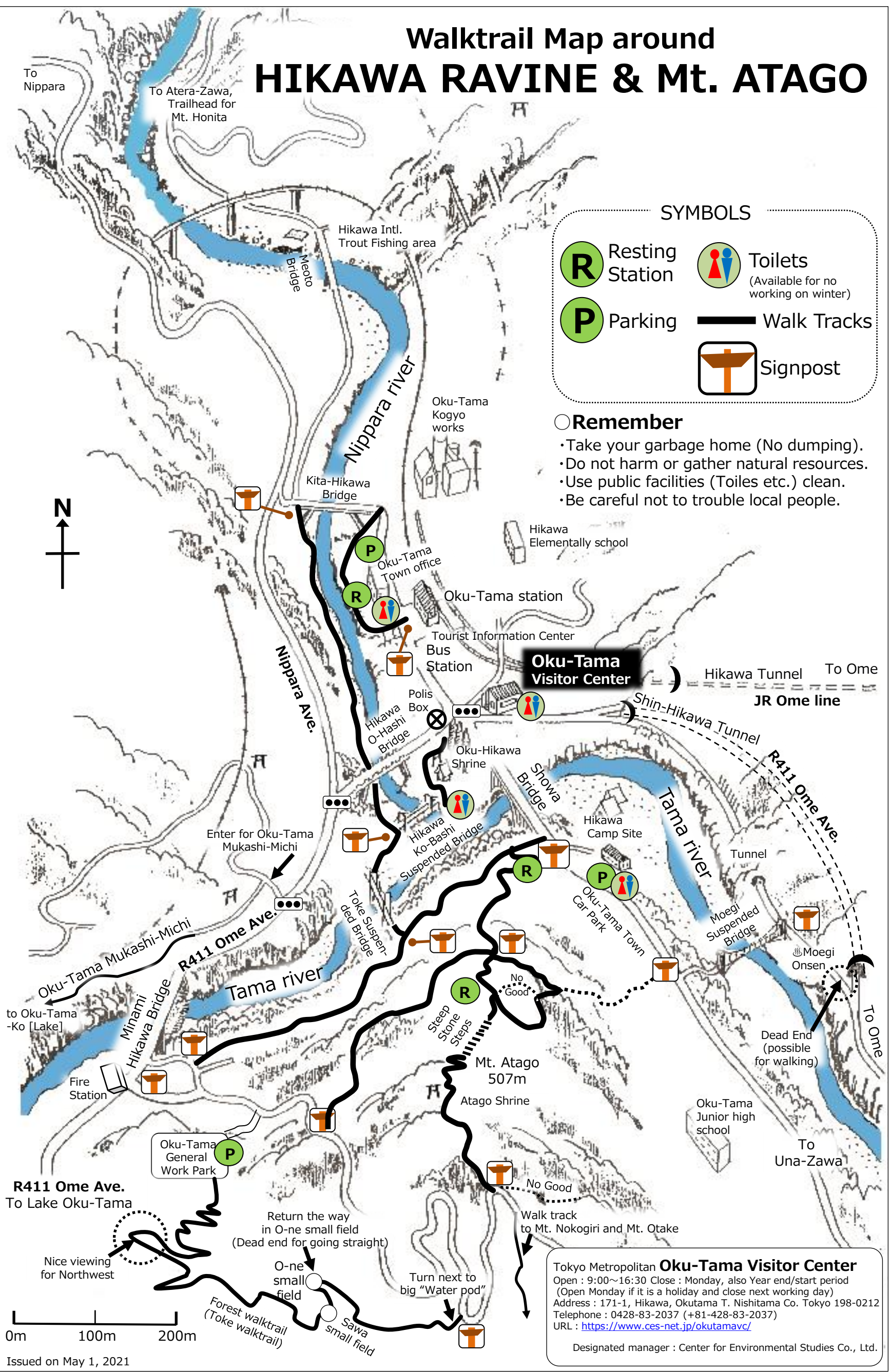
# Walktrail Map around HIKAWA RAVINE & Mt. ATAGO

## SYMBOLS

|   |   |
|---|---|
|  Resting Station |  Toilets<br>(Available for no working on winter) |
|  Parking         |  Walk Tracks                                     |
|   |  Signpost  |

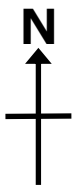
## Remember

- Take your garbage home (No dumping).
- Do not harm or gather natural resources.
- Use public facilities (Toilets etc.) clean.
- Be careful not to trouble local people.



Tokyo Metropolitan **Oku-Tama Visitor Center**  
 Open : 9:00~16:30 Close : Monday, also Year end/start period  
 (Open Monday if it is a holiday and close next working day)  
 Address : 171-1, Hikawa, Okutama T. Nishitama Co. Tokyo 198-0212  
 Telephone : 0428-83-2037 (+81-428-83-2037)  
 URL : <https://www.ces-net.jp/okutamavc/>  
 Designated manager : Center for Environmental Studies Co., Ltd.

# Tourist info. Map around HIKAWA(Oku-Tama station)



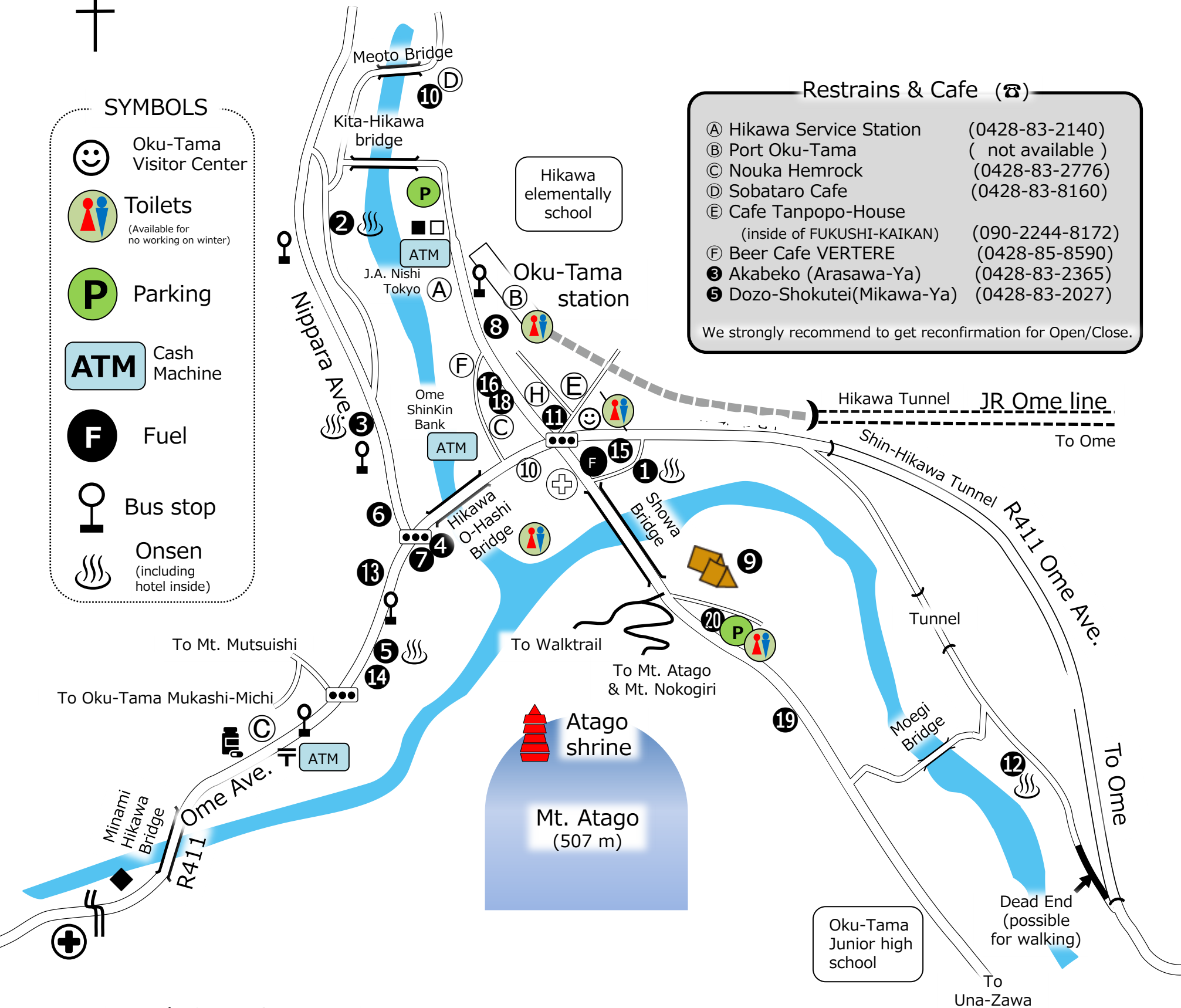
## SYMBOLS

- Oku-Tama Visitor Center
- Toilets  
(Available for no working on winter)
- Parking
- Cash Machine
- Fuel
- Bus stop
- Onsen  
(including hotel inside)

## Restrains & Cafe (☎)

- Ⓐ Hikawa Service Station (0428-83-2140)
- Ⓑ Port Oku-Tama (not available)
- Ⓒ Nouka Hemrock (0428-83-2776)
- Ⓓ Sobataro Cafe (0428-83-8160)
- Ⓔ Cafe Tanpopo-House  
(inside of FUKUSHI-KAIKAN) (090-2244-8172)
- Ⓕ Beer Cafe VERTERE (0428-85-8590)
- Ⓖ Akabeko (Arasawa-Ya) (0428-83-2365)
- Ⓗ Dozo-Shokutei(Mikawa-Ya) (0428-83-2027)

We strongly recommend to get reconfirmation for Open/Close.



## Hotels & Tourism (☎)

### Hotels

- ① Gyokusui-So (Ryokan) ☎(0428-83-2363)
- ② Kanko-So  
(Kokumin-Syukusha) ☎ (0428-83-2122)
- ③ Arasawa-Ya (Ryokan) ☎ (0428-83-2365)
- ④ Hachi noki (Minsyuku) (0428-83-2440)
- ⑤ Mikawa-Ya (Ryokan) ☎ (0428-83-2027)
- ⑥ Osho (Just staying) (0428-83-3477)
- ⑦ Shogetsu-Do (Minpaku) (0428-85-8113)

☎ mark shows availability for no stay use  
(Prior confirmation is necessary before going)

### Tourism

- ☺ Oku-Tama Visitor Center (0438-83-2037)
- ⑧ Oku-Tama Tourist Info. Center (0428-83-2152)
- ⑨ Hikawa Camp-Jo (0428-83-2134)
- ⑩ Hikawa Intl. Trout Fishing Center(0428-83-2147)
- ⑪ Treckling (Rent-a-Cycle) (0428-74-9091)
- ⑫ Moegi Onsen ☎ (0428-82-7770)

## Stores & Souvenir (☎)

### Stores

- ⑬ Times Mart (0428-83-2020)
- ⑭ Yamazaki Daily Store (0428-85-8717)
- ⑮ Maruni-Ya Niku-Ten (0428-83-2469)
- ⑯ Ichimatsu Niku-Ten (0428-83-2418)
- ⑰ Motohashi Seika-Ten (0428-83-3281)

### Souvenir

- ⑱ Misuzu-Do Kashi-Ten (0428-83-2015)
- ⑲ Yamashiro-Ya (Wasabi) (0428-83-2368)
- Ⓐ Hikawa Service Station (0428-83-2140)

## Traffic (☎)

- ⑳ Oku-Tama Town Car Park (0428-83-3087)
- Ⓕ Waida-Shokai (0428-83-2370)

## Hospitals, Pharmacy

### & Administration etc. (☎)

#### Hospitals

- ☺ Oku-Tama-Byo-In (0428-83-2145)
- ☺ Kawabe-Iin (0428-83-2136)

#### Pharmacy

- ☼ Sankyo-Do Yakkyoku (0428-83-2423)

#### Administration etc.

- Oku-Tama Town Office (0428-83-2111)
- ◆ Oku-Tama Fire Station (0428-83-2299)
- 〒 Oku-Tama Post Office (0428-83-2160)
- ☐ Oku-Tama Chiiki Shinko-Zaidan  
(Sin-Rin Therapy) (0428-83-8855)